



22115201

**GEOGRAPHY  
HIGHER LEVEL AND STANDARD LEVEL  
PAPER 1**

Thursday 5 May 2011 (afternoon)

1 hour 30 minutes

Candidate session number

0	0								
---	---	--	--	--	--	--	--	--	--

Examination code

2	2	1	1	-	5	2	0	1
---	---	---	---	---	---	---	---	---

**INSTRUCTIONS TO CANDIDATES**

- Do not open this examination paper until instructed to do so.
- Section A: answer all questions.
- Section B: answer one question.
- Write your answers in the boxes provided.
- Use examples, maps and/or diagrams where relevant.



0116

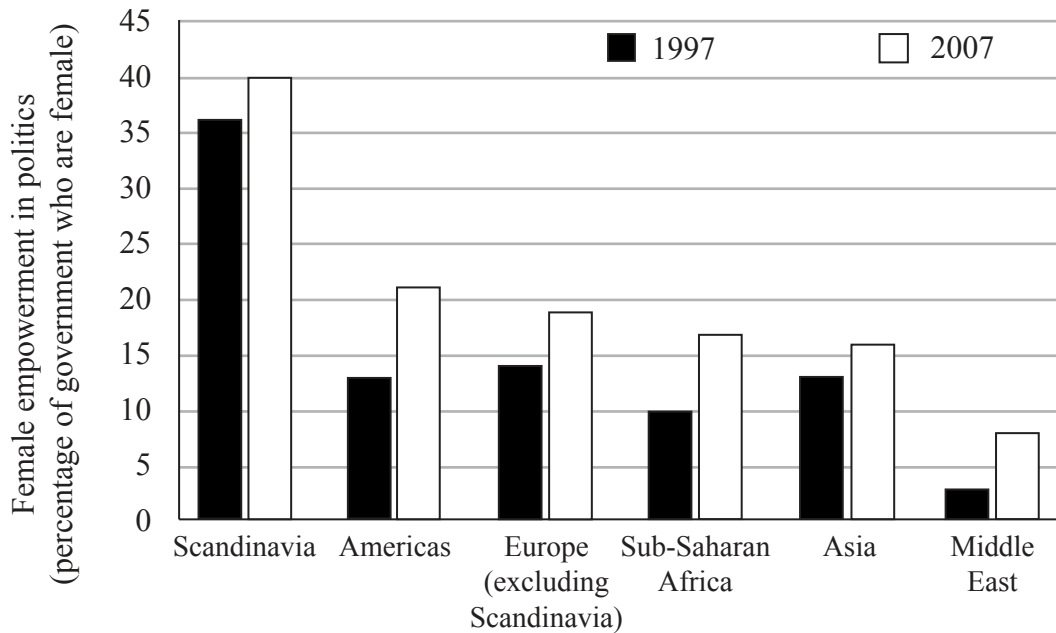
**Core Theme – Patterns and Change**

**SECTION A**

Answer **all** questions. Write your answers in the answer boxes provided.

**1. Populations in transition**

The graph shows how female empowerment in politics has changed in different regions since 1997.



[Source: adapted from UNESCO]

- (a) Referring to the graph, describe how female empowerment in politics varied between regions in 1997. [3]

.....

.....

.....

.....

.....

.....

(This question continues on the following page)



*(Question 1 continued)*

(b) Suggest reasons why female empowerment in politics has risen since 1997.

[4]

.....

.....

.....

.....

.....

.....

.....

.....

*(This question continues on the following page)*



0316

Turn over

*(Question 1 continued)*

(c) Analyse the pro-natalist policy of a country you have studied.

[5]

.....

.....

.....

.....

.....

.....

.....

.....

.....

.....



0416

Please **do not** write on this page.

Answers written on this page  
will not be marked.

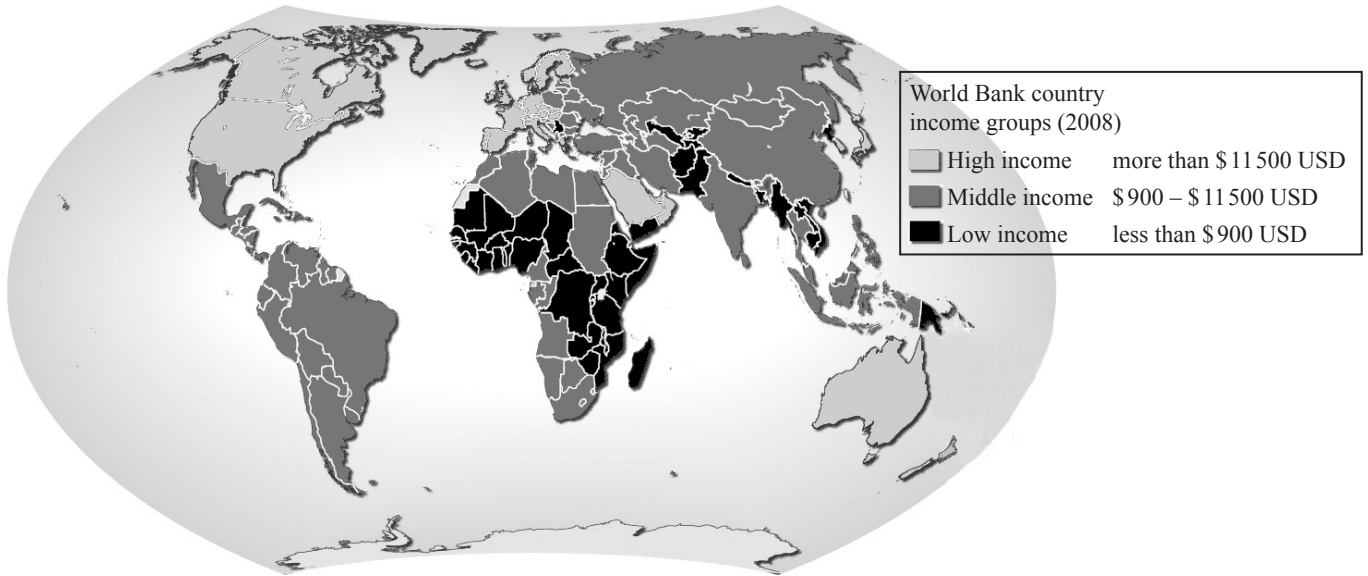


0516

Turn over

2. Disparities in wealth and development

The map shows the Gross National Income (GNI) per person for different countries in 2008.



[Source: <http://maps.grida.no/go/graphic/world-bank-country-income-groups>]

(a) Describe the global pattern of GNI per person shown on the map.

[3]

.....

.....

.....

.....

.....

.....

*(This question continues on the following page)*



0616

*(Question 2 continued)*

- (b) Suggest **two** reasons why GNI per person is not a reliable way of measuring global disparities. [2+2]

1.	..... ..... ..... .....
2.	..... ..... ..... .....

*(This question continues on the following page)*



*(Question 2 continued)*

(c) Explain how debt relief may help to reduce global disparities.

[5]

.....

.....

.....

.....

.....

.....

.....

.....

.....

.....





Please **do not** write on this page.

Answers written on this page  
will not be marked.

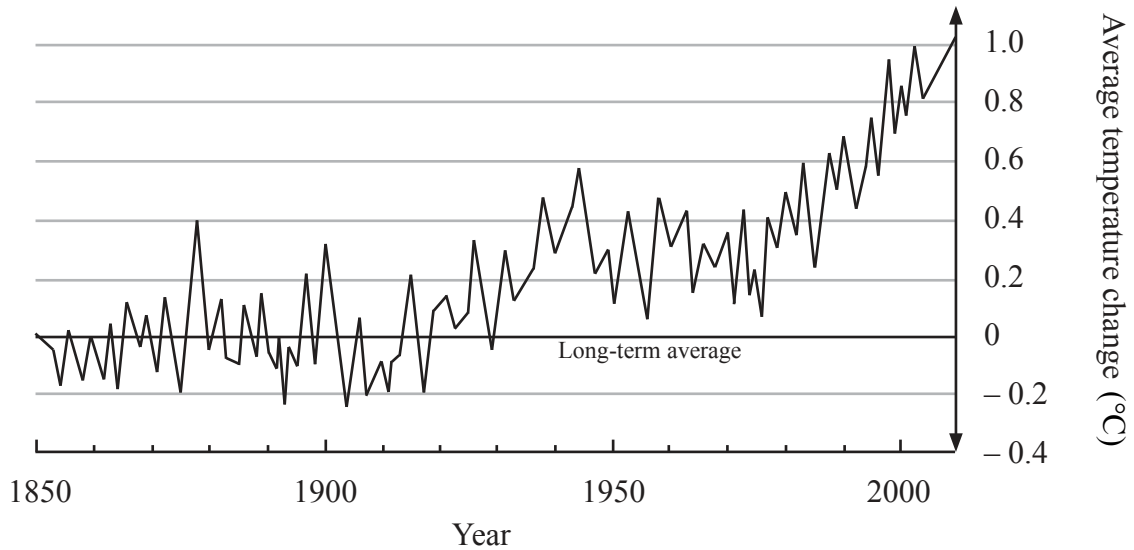


0916

Turn over

3. Patterns in environmental quality and sustainability

The graph shows global temperature changes since 1850.



[Source: IPCC – data based on a graph in *The Economist*, 9 September 2006]

- (a) State **one** natural external forcing which could have influenced the changes in temperature shown on the graph. [1]

.....

.....

- (b) Referring to the graph, describe how temperature has changed since 1850. [3]

.....

.....

.....

.....

.....

.....

(This question continues on the following page)



(Question 3 continued)

- (c) Explain **three** possible environmental consequences of global climate change since 1950. [3×2]

1.	..... ..... ..... .....
2.	..... ..... ..... .....
3.	..... ..... ..... .....



4. **Patterns in resource consumption**

(a) Identify **three** fossil fuels.

[2]

1. ....
2. ....
3. ....
.....

(b) Suggest **two** reasons for the changing importance of nuclear energy.

[2×2]

1. ....
.....
.....
.....
.....
2. ....
.....
.....
.....
.....

*(This question continues on the following page)*



*(Question 4 continued)*

- (c) Explain the relationship between energy usage and ecological footprint for **one or more** countries. [5]

.....

.....

.....

.....

.....

.....

.....

.....

.....

.....





A large rectangular area containing 25 horizontal dotted lines for writing.



1516

Turn over

